



Understanding Society

THE UK HOUSEHOLD LONGITUDINAL STUDY

# Collecting Biomeasures in UKHLS - *Understanding Society*

An initiative by the Economic and Social Research Council, with scientific leadership by the Institute for Social and Economic Research, University of Essex, and survey delivery by the National Centre for Social Research.

# Background



- *Understanding Society* is a longitudinal study based on a household panel design (similar to British Household Panel Survey)
  - Target sample size of 40,000 households, 100,000 individuals
  - Sample components: General population, former BHPS, Ethnic minority boost, Innovation panel.
  - Fieldwork undertaken by NatCen
  - Main fieldwork started in January 2009
    - Wave 2 started January 2010, including BHPS sample
-

# Biosocial *Understanding* *Society*

- Collection of biomarkers part of overall study objectives
  - Funds from Large Facilities Capital Fund to support collection on part of the sample
    - Quick timeframe, to complete collection by 2012
  - Aim to collect from BHPS sample and from random sample of adults from new samples
  - Target to collect from 20-25k adults
  - Aim that this should be the first of series of collections
-

# Objectives of Biomeasure Component

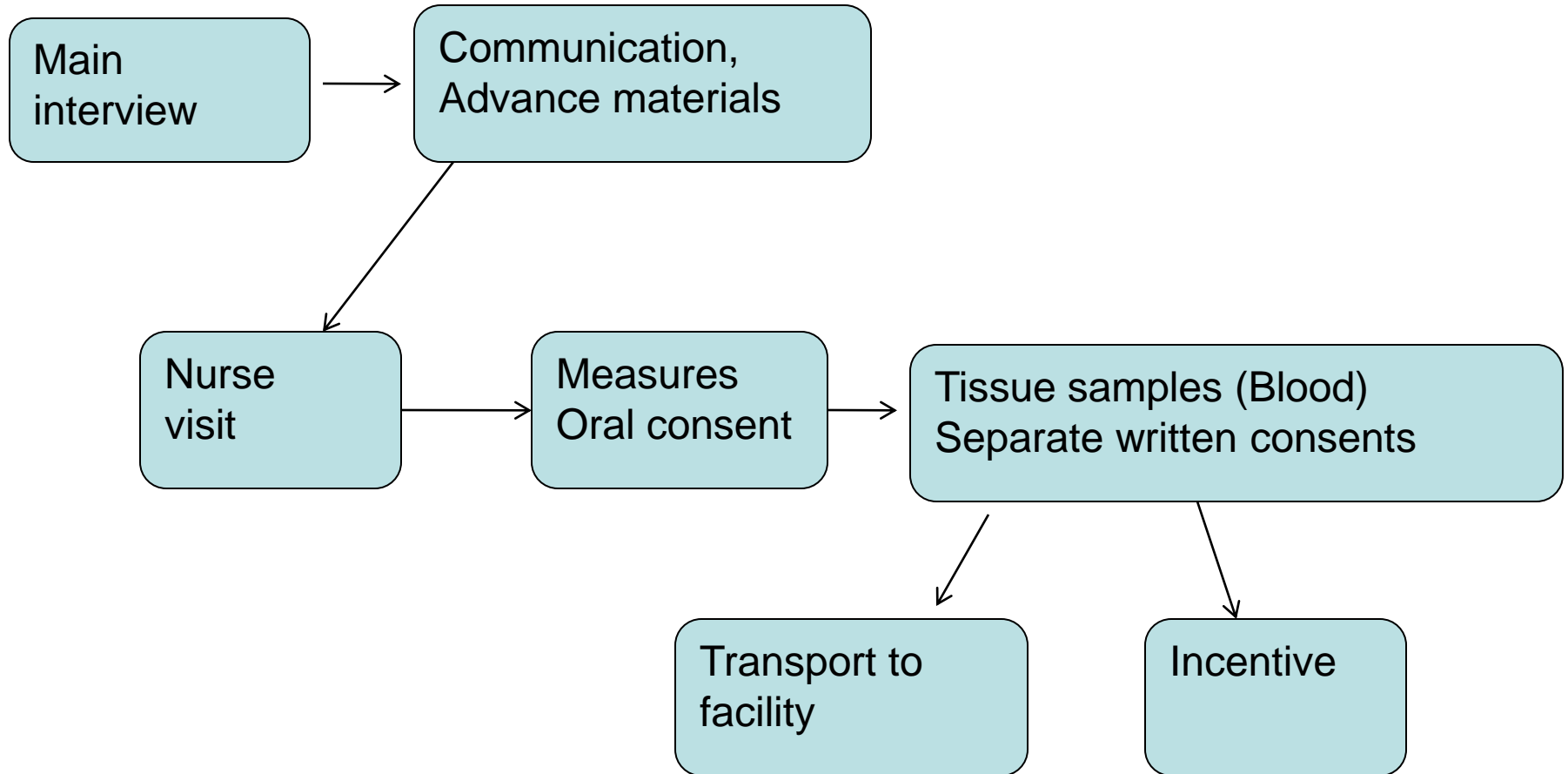
- Resource for a wide range of research projects
  - Support social science and biomedical research and research linking the two
  - Rich socio-economic data provides opportunity to assess exposure and antecedent factors of health status, understanding disease mechanisms and pathways, household and socioeconomic effects
  - Processes underlying health inequalities
  - Health effects on socio-economic outcomes, e.g. obesity
  - Interaction of social and biological factors in behaviour
-

# Data collection plan



- 2 phases
    - collection by nurse interviewers, Spring 2010 - 2011
    - trained regular interviewers, Spring 2011-2012
  - Begin with measurement modules from HSE
  - Tissue samples stored for future access by a range of projects
  - ESRC to establish a data access committee
-

# Sequence in Nurse Visit



# What do we aim to collect



- Blood samples for DNA and analytes – Phase 1
  - Saliva (DNA) and dried blood spots – Phase 2
  - Anthropometrics: height, weight, waist circumference, BIA for body fat
  - Blood pressure
  - Lung function – phase 1
  - Grip strength
  - Cognitive assessments for full adult sample
-

# Cognitive measures



- Considerations –multiple aspects, brevity, comparability, reliability & validity, anticipate mode shifts
  - Part of main interview in wave 3
  - Aspects to be measured - fluid intelligence, working memory, episodic memory (immediate and delayed recall), prospective and perceived memory, numeracy
-



# Informed Consent, Ethics



- Informed consent is central issue
  - Oral consent – record willingness to have anthropometric measurements
  - Written consent
    - to take, store and use blood in research
    - For sample of DNA to be taken from blood, stored and used in scientific research
    - Specifies some uses will not be permitted
-

# Current Issues



- Collect and store vs. Some analysis
  - Ethnic minority boost sample
  - Detailed design of interviewer collected measures
    - Sample components
    - Sequencing
    - Measures and analysis
    - Incentives
  - Qualitative research related to participation
-